



## **\*Summer Solstice\* Reading**

*Guidance & Support for Integrating  
& Expanding Your Life at this Time*

~ **June 21, 2023** ~



***Divinations + Animal Guides***

### **At this time, it is a good time to:**

- **Re-View ~ your Life** (from a Higher vantage point)
- **Re-Assess ~ your Plan** (what needs tweaking?)
- **Re-Consider ~ your Options** (you have more than you think)
- **Re-Evaluate ~ your Personal Truth, Philosophy & Belief System**  
(in the present moment)
- **Re-Connect ~ with your Intuition** (open the channels)
- **Re-Form ~ your Being** (from the inside out)
- **Re-Write ~ your Personal Story** (of the upcoming 1-year)
- **Re-New ~ your Sense of Self** (at this evolved level of consciousness)

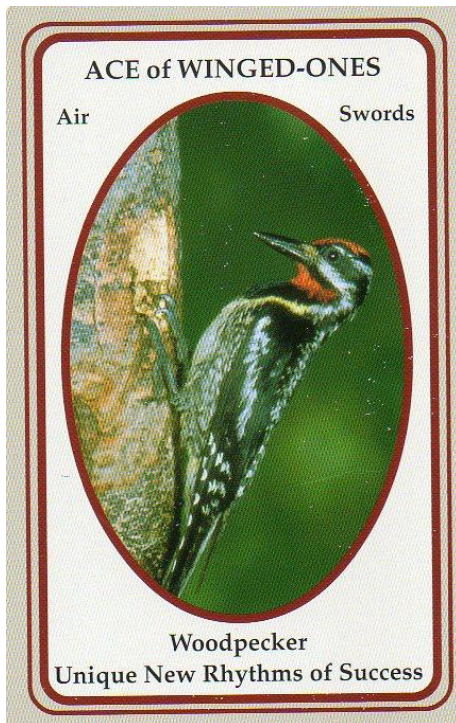
**Summer Solstice** is a time to celebrate all that you have been able to accomplish this year, while taking some time to tend to your own personal replenishment because there is more to be done before the end of the year. This reading was designed to support your **Summer of Stability, Healing & Restoration** ... in preparation for this year's **Fall Harvest**. Essentially, you are deeply supported to review territory you already have traversed (review the last quarter), while becoming acutely aware of that which still needs to be done before the end of the year so that it can support & protect you.





## FIRE :: 2 :: Possibilities

The eagle has an overview of all the possibilities contained in the landscape below, as he flies freely, naturally and effortlessly through the sky. He is really in his domain, very grand and self-contained. This card indicates that you are at a point where a world of possibilities is open to you. Because you have grown more loving towards yourself, more self-contained, you can work easily with others. Because you are relaxed and at ease, you can recognize possibilities as they present themselves, sometimes even before others can see them. Because you are in tune with your own nature, you understand that existence is providing you with exactly what you need. Enjoy the flight! And celebrate all the varied wonders of the landscape spread before you.



## WOODPECKER :: Ace :: New Rhythms of Success

This drumming on the trees links Woodpecker to the heartbeat of the Earth. Drumming has many mystical associations from new life rhythms to shapeshifting rhythms within our current life. Woodpecker's appearance affirms a new rhythm at play within our life, one that will eliminate our worries and allow success to take root for us. It is the beginning of something new, and thus our focus should be on new plans and new endeavors. Woodpecker indicates new dimensions are opening for us. Unlike the flight patterns of other birds, Woodpecker's flight is unique. This emphasizes that it is increasingly important to follow our own unique rhythms & flights. Now is the time to march to the beat of a different drummer, one that is comfortable for us. It is time to do what works for us in the manner that is best for us. If Woodpecker has appeared, then we have laid the foundation, and now is the time to follow our own rhythms in building upon that foundation, to pursue endeavors in the manner unique to us. Doing things the way we have always done them in the past will not work. Doing them the way others have done them will not work for us either. Now is the time to plan and build for the future in the manner best for us. There is a new rhythm, a new ability, and a new opportunity for rapid growth around us right now. Reversed Woodpecker can indicate a lack of discrimination in our activities. Perhaps we are responding more emotionally when at this moment we should be responding rationally and analytically. We should take a closer look at what is going on around us. It can also be a warning to be cautious and gentle at this time. We should not force or apply any more pressure to what we have already set in motion; double and even triple check everything before going further. Any lack of planning will create obstacles and delays.

### WOODPECKER :: Questions to Ask:

Are you being irrational?

Are others or are you being less discriminating?

Are you jumping in unprepared?

Are you trying to force new starts?

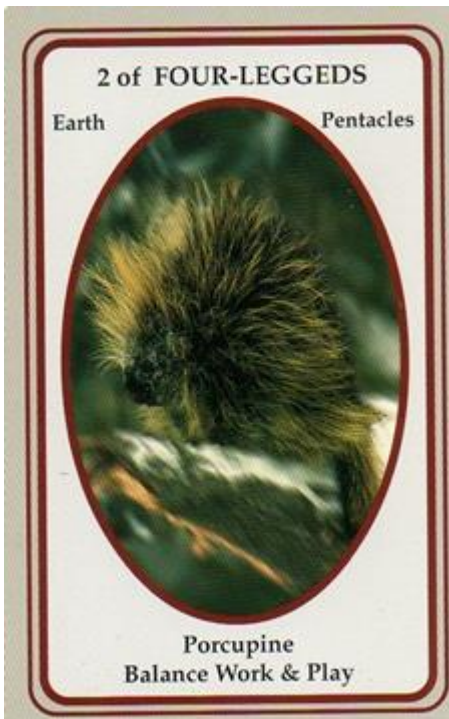
Are you over-analyzing?

Are you trying to do things the way they have always been done?



### **FIRE :: 4 :: Participation**

Each figure in this mandala holds the left hand up, in an attitude of receiving, and the right hand down, in an attitude of giving. The whole circle creates a tremendous energy field that takes on the shape of the double dorje, the Tibetan symbol for the thunderbolt. The mandala has a quality like that of the energy field that forms around a buddha, where all the individuals taking part in the circle make a unique contribution to create a unified and vital whole. It is like a flower, whose wholeness is even more beautiful than the sum of its parts, at the same time enhancing the beauty of each individual petal. You have an opportunity to participate with others now to make your contribution to creating something greater and more beautiful than each of you could manage alone. Your participation will not only nourish you, but will also contribute something precious to the whole.



### **PORCUPINE :: 2 :: Balance Work & Play**

Porcupines have an innate curiosity with a good natured disposition as it goes about its day, finding enjoyment in all that it does. Whether playing, seeking out food, or even sleeping, they always seem to find time for it all, and can teach us how to balance work & play. When they appear, they remind us to have some fun and to explore what we're curious about. Porcupines can also show us how to resist the barbs of others and how to enjoy a sense of wonder in life in spite of the work & difficulties we may encounter. They show us how to keep the inner child strong by balancing work & play while still being able to achieve. When Porcupine appears, our balance will be greater than anticipated, with the ability to juggle more than we thought possible, at least for a short time. Now is the time to focus upon harmony and the maintaining of a good attitude amidst disturbances around us. By doing so, achievement will be ours. If reversed, Porcupine often reflects an imbalance, usually between work & play. We may be trying to do too much, taking on too many activities at once, and having difficulty maintaining our balance. It usually reflects a need for greater organization or even more difficulties are likely to arise. However, this does not mean we are to give up on our activities, but rather indicates that more balance & organization is most important. We may be focusing so much on work that we are not eating properly and the stress is leeching the vitamins from our body. Porcupines live in arboreal areas, feeding on barks of trees and young leaves and blossoms of plants. They also have a great craving for salt. Porcupine reversed may indicate a need to monitor salt intake, along with other eating habits.

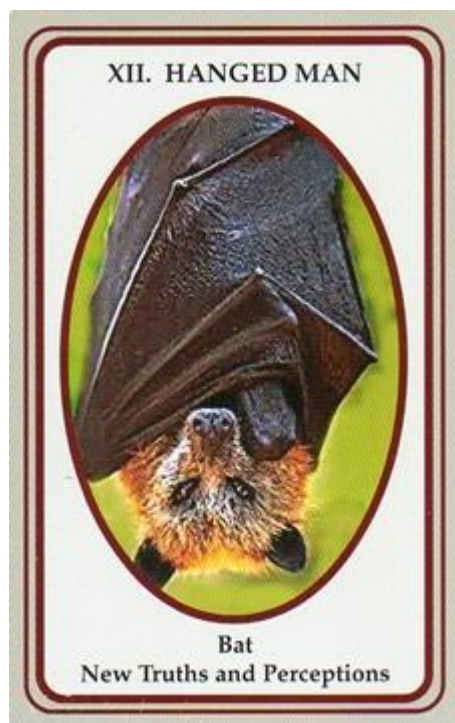
#### **PORCUPINE :: Questions to Ask:**

- Are we allowing the opinions of others to dissuade us from exploring what we might find enjoyable?
- Are we taking time for recreation? Are we balancing work & play? Are we eating properly?
- Are we oversensitive to the barbs of others?
- Are we inflicting our own barbs inappropriately?
- Are we allowing past barbs to prevent our experiencing joy in the present?



### III :: EMPRESS :: *Creativity*

From the alchemy of fire and water below to the divine light entering from above, the figure in this card is literally 'possessed by' the creative force. Really, the experience of creativity is an entry into the mysterious. Technique, expertise and knowledge are just tools; the key is to abandon oneself to the energy that fuels the birth of all things. This energy has no form or structure, yet all the forms and structures come out of it. It makes no difference what particular form your creativity takes - it can be painting or singing, planting a garden or making a meal. The important thing is to be open to what wants to be expressed through you. Remember that we don't possess our creations; they do not belong to us. True creativity arises from a union with the divine, with the mystical and the unknowable. Then it is both a joy for the creator and a blessing to others.



### BAT :: 12 :: *New Truths & Perceptions*

Bats are the only mammals that fly. All flight implies a rising above, the promise hidden within chaotic energies of change. The presence of Bat always indicate new perceptions and endeavors are about to take flight amidst the energies of change. Barriers will be pierced and new truths will be uncovered. Any changes occurring now will be for the best, although the benefits may not initially be recognized. Change and transition always bring a fresh outlook and perspective. That which was not understood will become clearer. That which was not visible will become able to be seen. Creativity and ideas will flow anew. We will see the truth in things we could not see before. When Bat arrives, so will an increased ability to discern the hidden messages and implications of others' words. Listen as much to what is not being said. Trust your instincts. Bat always indicates initiation that brings the promise of new truth and higher perceptions after the change. Reversed Bat may be pointing out a failure to rise above situations in our life. We need to take a new perspective; we need to let go of the past. We need to release or change some aspect of our life for rebirth to occur. We must remember that change is only upsetting to the degree we remain emotionally attached to what is no longer beneficial. Bat reminds us that every aspect of facing our fears has value for us, no matter how messy it may seem to be. Bat may be showing us where we may be resisting change that could benefit us. Bat often challenges us to let go of the old and create the new. We may have become so wrapped up in the material that we are not able to see the larger picture.

#### BAT :: Questions to Ask:

- Are we avoiding facing what is inevitable?
- Are we refusing to see the truth of a situation?
- Are we harboring the attitude of "better the devil we know than the one we don't"?
- Are we letting our fears rule us?
- Are our imaginings getting overblown?
- Are we not seeing things for what they truly are?



### **WATER :: Page :: *Understanding***

The bird pictured on this card is looking out from what seems to be a cage. There is no door, and actually the bars are disappearing. The bars were an illusion, and this small bird is being summoned by the grace and freedom and encouragement of the others. It is spreading its wings, ready to take flight for the very first time. The dawn of a new understanding - that the cage has always been open, and the sky has always been there for us to explore - can make us feel a little shaky at first. It's fine, and natural to be shaky, but don't let it overshadow the opportunity to experience the lightheartedness and adventure on offer, right there alongside the shakiness. Move with the sweetness and gentleness of this time. Feel the fluttering within. Spread your wings and be free.



### **WOLF :: 18 :: *Guidance & Guardianship***

When Wolf appears, it is always a reminder to listen to our own intuition. Wolves are alert to the subtlest of changes within their environments and teach us how to recognize the same within our own. Wolves teach us to trust our intuitive guidance, and by doing so, they become our guardians & guides. Wolf teaches us to empower our verbal communication with appropriate body language and vice versa. When Wolf appears, our communications become stronger, and the communications of others becomes clearer. We recognize undertones and body signals that may not reflect what we are actually hearing. Trust your impression at these times. Our intuition & psychic abilities are heightening tremendously. Now is the time to rely more on our own insight than that of others. Changes are occurring even though they have not shown themselves in the physical world. Some of the changes and our initial recognition of them will come through dreams. Wolf teaches us to hear our inner voice and guard us from inappropriate actions. When Wolf shows up, it is time to trust our inner guidance in finding our own new path and in taking control of our life. Wolf tells us that there will be guidance & protection as we take up our new journeys. Reversed Wolf suggests that we may not be seeing things as they really are and our judgments may be off. This is not a time to let our imagination run away with us. By maintaining control, watching & moving more cautiously, we will avoid problems. Reverse Wolf tells us not to take risks at this time because it is possible to misunderstand & misinterpret our inner guidance more easily right now and we may not be able to trust the guardianship of our intuition.

#### **WOLF :: Questions to Ask:**

- Are we being clear in our communications? Are others?
- Are we responding, even though the communications and intuition is unclear?
- Are we being too sensitive right now?
- Are we allowing our fears to prevent us from stepping out into new directions?



### **WATER :: Queen :: *Receptivity***

Receptivity represents the feminine, receptive quality of water and of the emotions. Her arms are extended upwards to receive, and she is completely immersed in the water. She has no head, no busy and aggressive mind to hinder her pure receptivity. And as she is filled she is continuously emptying herself, overflowing, and receiving more. The lotus pattern or matrix that emerges from her represents the perfect harmony of the universe that becomes apparent when we are in tune with it. The Queen of Water brings a time of unboundedness and gratitude for whatever life brings, without any expectations or demands. Neither duty or thought of merit or reward are important. Sensitivity, intuition and compassion are the qualities that shine forth now, dissolving all the obstacles that keep us separate from each other and from the whole.

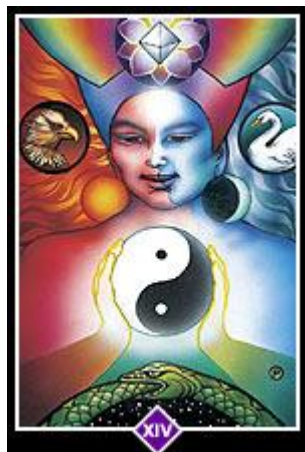


### **DRAGONFLY :: King :: *Trust in the Power of Light***

When Dragonfly appears, it is time to trust in the power of light and we will be able to perceive the subtlest of movements within our own life. They remind us that as light shifts, so do our perceptions, and they are very sharp and accurate now. When Dragonfly appears, it is time to emerge from our own nymph stage, to come out of the waters of immaturity, and give expression to who we truly are. We can rely on our perceptions and the power of our own light to succeed. Our efforts have matured. Now is the time to shine. Dragonfly reminds us that we are light, and we can shine in very powerful ways if we choose to do so. Now is the time to express our own creative imagination - our own inner light. Life is never what it appears, but Dragonfly helps us to see through the illusions so we can more fully shine in our endeavors. There is transformation and maturity about. When Dragonfly appears in reverse, we may not be seeing things clearly. We should clear the specks from our sight or someone might be misleading us. Things are not what they seem to be and we need to take a closer look. Because Dragonflies move from the water to the air environment, we should examine this significance. Water is often associated with the emotions, and movement from water can reflect emotional maturity. When reversed, Dragonfly can indicate a need to balance our emotions. We may need some emotional fresh air, some emotional maturity.

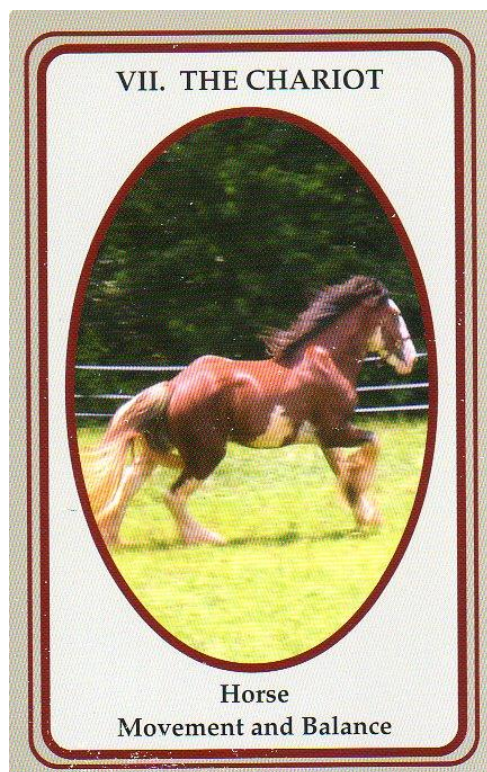
#### **DRAGONFLY :: Questions to Ask:**

- Are we neglecting the emotions? Do we need some expression of emotions?
- Do we need to gain a new perspective?
- Are we being too rational and over analyzing?
- Are we not making the changes and transformations we should?
- Are we resisting change when we shouldn't?
- Do we not trust our own intuition and creativity?
- Are we giving all of our creative power over to someone else?
- Are we refusing to see the signs around us, especially with other people?
- Are we not seeking our own solutions?



### XIV :: TEMPERANCE :: *Integration*

The image of integration is the *unio mystica*, the fusion of opposites. This is a time of communication between the previously experienced dualities of life. Rather than night opposing day, dark suppressing light, they work together to create a unified whole, turning endlessly one into the other, each containing in its deepest core the seed of the opposite. The eagle and the swan are both beings of flight and majesty. The eagle is the embodiment of power and aloneness. The swan is the embodiment of space and purity, gently floating and diving, upon and within the element of the emotions, entirely content and complete within her perfection and beauty. We are the union of eagle and swan: male and female, fire and water, life and death. The card of integration is the symbol of self-creation, new life, and mystical union; otherwise known as alchemy.



### HORSE :: 7 :: *Movement & Balance*

Horse is probably the major contributor to the spread of civilization. Before the domestication of Horses, the distances between people and societies were great, and there was little interaction. Horse has served humans in travel, agriculture, war and a multitude of other areas of life, enabling people to explore and to find freedom from constraints of their own communities. Rich in lore & myth, horses have been associated with magic, divination & astral travel, but most of all they represent movement and travel. If Horse has shown up, there is going to be movement. This movement will best accomplished through self-discipline - both physical & mental. Horse reminds us of the need for self-discipline in our endeavors. Self-discipline helps our growth to be controlled and steady. Horse reminds us to continue forward in our efforts. If we discipline our movements and ourselves, we will find our sense of power renewed. The four legs of Horse reflect the need for balance in our endeavors. Horses in our life can mirror an example that the best and smoothest progress will occur through balance and not through extremes of any sort. Horse brings with it new journeys and new balance, suggesting that it is time to travel and to discover some of the multiplicity of life and the power it holds. Horse will teach us how to ride forward into new directions to discover our own freedom and power.

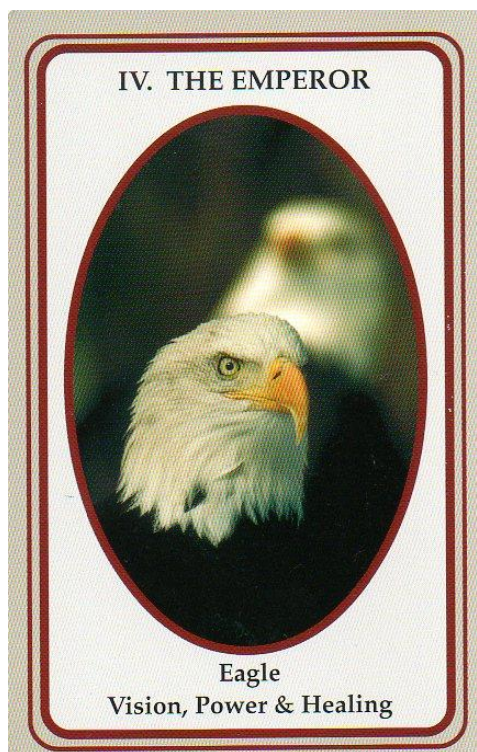
#### HORSE :: Questions to Ask:

- Are we feeling constricted?
- Do we need to move on or allow others around us to move on?
- Are we refusing to assert our freedom and power in new areas of our life?
- Are we refusing to honor the movement we have had until this time?



#### IV :: EMPEROR :: *The Rebel*

The powerful and authoritative figure in this card is clearly the master of his own destiny. On his shoulder is an emblem of the sun, and the torch he holds in his right hand symbolizes the light of his own hard-won truth. Whether he is wealthy or poor, the Rebel is really an emperor because he has broken the chains of society's repressive conditioning and opinions. He has formed himself by embracing all the colors of the rainbow, emerging from the dark and formless roots of his unconscious past and growing wings to fly into the sky. His very way of being is rebellious - not because he is fighting against anybody or anything, but because he has discovered his own true nature and is determined to live in accordance with it. The eagle is his spirit animal, a messenger between earth and sky. The Rebel challenges us to be courageous enough to take responsibility for who we are and to live our truth.



#### EAGLE :: 4 :: *Vision, Power & Healing*

Eagle is a symbol of heroic nobility, vision & healing and its lore is filled with mysticism. Eagles see 8-10 times better than humans, and so their appearance always reflects new vision. This vision can also be far reaching into the past or the future. Eagle reflects a need to look at things from a new perspective and to take a different course of action for new health & life to unfold. A willingness to follow the vision, even if there is the possibility of being scorched, will be necessary if that new healing and new life is to unfold. The feet of the Eagle, with talons, are designed to grasp & hunt, representing the importance of taking advantage of opportunities that present themselves. This serves as a reminder that having the vision is only part of the creative process. Those with Eagle showing up must learn to see their opportunities and must snatch them as they arise. As with all predators, Eagle helps to keep the world in balance, capturing the weak & sick, helping to keep the world healthy by preventing the spread of disease. This healing role will awaken in many forms. Opportunities to explore holistic healing techniques and studies will arise and be of greater benefit now. Eagle teaches us vision while staying grounded. It teaches the laying of a solid foundation before trying to soar. Eagle suggests that it is important to know when to speak, how much, and how strongly. Unless speech is controlled, someone may be hurt inadvertently, including you. Reverse Eagle may reflect our own impatience and too opportunistic behaviors or where we are wasting energy that can be quite expensive to our health and other areas of our life. Eagle can also imply an unwillingness to stay grounded & connected.

#### EAGLE :: Questions to Ask:

Are we getting too flighty?

Are we not accepting our responsibilities?

Are we trying to do too much too soon without truly developing our abilities?

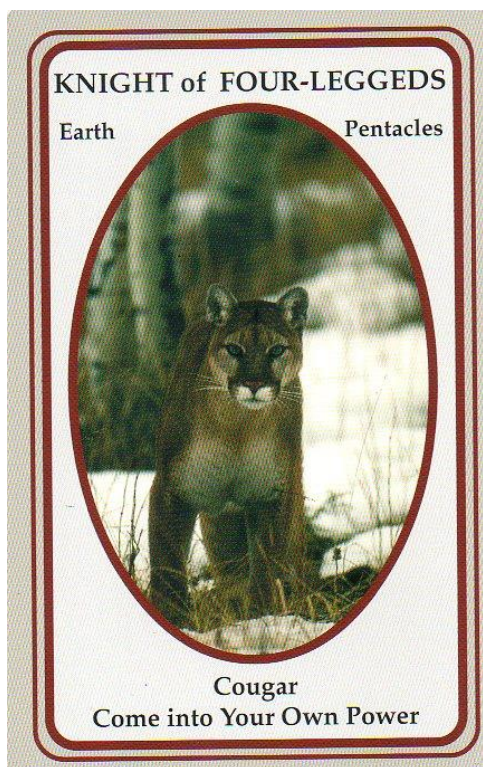
Is there a lack of control or a lack of self-discipline?





**WATER :: 2 :: *Friendliness***

The branches of these two flowering trees are intertwined, and their fallen petals blend together on the ground in their beautiful colors. It is as if heaven and earth are bridged by love. But they stand individually, each rooted in the soil in their own connection with the earth. In this way they represent the essence of true friends, mature, easy with each other, natural. There is no urgency about their connection, no neediness, no desire to change the other into something else. This card indicates a readiness to enter this quality of friendliness. In the passage, you may notice that you are no longer interested in all kinds of dramas and romances that other people are engaged in. It is not a loss. It is the birth of a higher, more loving quality born of the fullness of experience. It is the birth of a love that is truly unconditional, without expectations or demands.



**COUGAR :: Knight :: *Come Into Your Own Power***

Cougar is one of the most powerful & fastest cats, it can leap over 40-feet and is strong enough to kill prey with its bite or claws. Its appearance always indicates a time of coming into our own power, a time in which our instincts are very trustworthy. With good self-motivation, we can capture success & leadership within our life. If Cougar has appeared, it's time to acknowledge our abilities and to trust in them. When Cougar appears, most of the trial aspects have been experienced and now is the time to assert our abilities more solidly & aggressively. Cougar's appearance reminds us to stretch ourselves. We should move stealthily toward what we wish and then leap aggressively upon it. Cougar's appearance implies there is choice lying ahead of us – choice to continue as we have or to push ourselves to the next level, but we need to act quickly and strongly at the opportunities that present themselves now. Cougar's appearance heralds a time of accomplishment, a coming into our own power if we take the leap. When it attacks, it does not hesitate – teaching us decisiveness in the use of our personal power. When threatened, it responds immediately by attacking the most vulnerable place – reminding us we have worked to develop our power and now it is time to start expressing it more dynamically. With Cougar's appearance, it is time to fill our heart with our power, knowing the time & circumstances are right to take charge of our life most effectively.

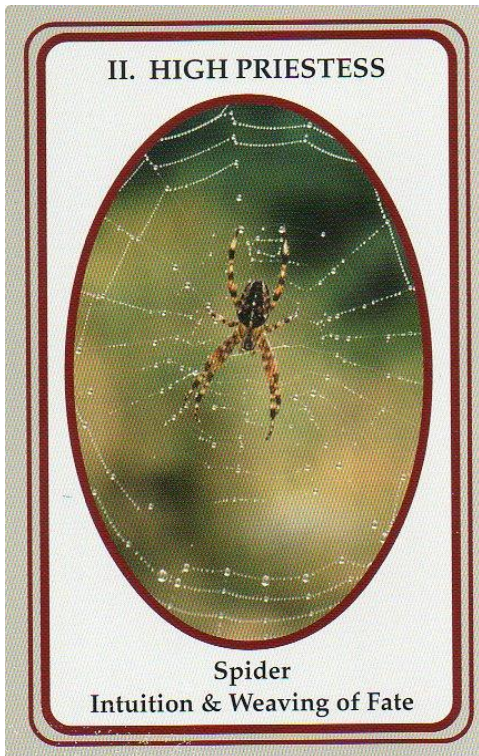
**COUGAR :: Questions to Ask:**

- Are we ignoring opportunities that present themselves rather than jumping upon them?
- Are we being too impatient in seeking what we wish?
- Are we dissatisfied with our progress?
- Are we being too forceful in our pursuits?
- Are we letting others take charge?
- Have we forgotten the importance of self-motivation & initiative?



**WATER :: Page :: Trust**

Now is the moment to be a bungee jumper without the cord! And it is this quality of absolute trust, with no reservations or secret safety nets, that the Knight of Water demands from us. There is a tremendous sense of exhilaration if we can take the jump and move in to the unknown, even if the idea scares us to death. And when we really take trust to the level of the quantum leap, we don't make any elaborate plans or preparations. We don't say, "Okay, I trust that I know what to do now, and I'll settle my things and pack my suitcase and take it with me." No, we just jump, with hardly a thought for what happens next. The leap is the thing, and thrill of it as we free-fall through the empty sky. The card gives a hint here, though, about what waits for us at the other end - a soft, welcoming, yummy pink, rose petals, juicy ... c'mon!



**SPIDER :: 2 :: Intuition & Weaving of Fate**

Spiders signals an awakening of our creative energies. Spider shows up when we need to balance & work between past & future, physical & spiritual, male & female, waking & sleeping. Spider teaches the magic of creation, how to weave our own fates & heralds opportunities for creativity and reflects three kinds of magic at play. The first is the magic of creativity, reflected by its ability to spin silk, reminding us of our own power at this time to spin new creations. The second is the magic of assertion, showing us that only by asserting & expressing our creative energies are we empowered. The third magic at play is the linking of past & future, death & rebirth, waxing & waning – all reflected in the web's spiral. Here Spider helps us realize that there is a creative rhythm which we may not recognize, but which brings balance & polarity. If Spider has appeared, do not trust what you see; trust what you feel instead. Although all Spiders spin silk, not all weave webs. This is a clear message: do not take the roundabout way of dealing with things or you will get entangled. Be direct & straightforward. Do not be afraid to employ these energies in seemingly inaccessible areas. Weave your creative threads in the dark and then when the sun hits them, they will glisten with intricate beauty. Spider teaches us to trust subtle perceptions, showing that there is more depth and more activity beneath the surface. They encourage us to use our creative opportunities, and by doing so, we take our Fate back within our own hands. Spider shows us how to weave our energies so that the rewards of our efforts will come to us. Reversed Spider reminds us to be patient, to stop pushing for our rewards. By pushing, we waste efforts and don't let the benefits come to us in the time that is best for us.

**SPIDER :: Questions to Ask:**

Are you hesitating to weave your dreams into reality?

Are you taking advantage of creative opportunities?

Are you feeling stuck and out of balance? Are you not following through completely?

Is it time for you to start writing, drawing & creating?

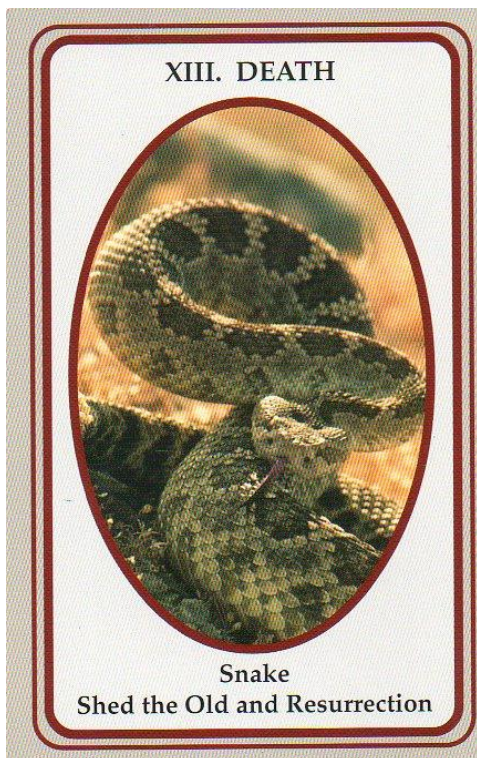
Are you going in multiple directions rather than focusing upon a central goal?

Are you becoming self-absorbed? Are you focusing on others' accomplishments and not on your own?



## XXI :: THE WORLD :: *Completion*

Here the last piece of a jigsaw puzzle is being put into its place, the position of the third eye, the place of inner perception. Even in the ever-changing flow of life there are moments in which we come to a point of completion. In these moments we are able to perceive the whole picture, the composite of all the small pieces that have occupied our attention for so long. In the finishing, we can either be in despair because we don't want the situation to come to an end, or we can be grateful and accepting of the fact that life is full of endings and new beginnings. Whatever has been absorbing your time and energy is now coming to an end. In completing it, you will be clearing a space for something new to begin. Use this interval to celebrate both - the end of the old and the coming of the new.



## SNAKE :: 13 :: *Shed the Old & Resurrection*

Snake is one of the most archetypal symbols, a universal sign of healing, life, death & rebirth. It is the epitome of transformation, and though often seen as a symbol of death, we forget that death is part of a larger cycle that includes rebirth. Death in the tarot, especially when depicted as the Snake, does NOT in any way, shape or form imply a physical death. However, it does indicate a transition; a shedding of the old so the new can be born, reflecting a kind of resurrection at play within our lives. Snakes are amazing reptiles. From the moment they are born till the moment they die, they never stop growing. This is why they shed their skin. They have outgrown it. The Snake's shedding of its skin reminds us that periodically we must shed what no longer fits or suits us. Although Snakes have two eyes, they do not see very well, relying on their sensitivity to vibrations and to smell. Do not trust what you see; trust what you feel. You will feel the changes arriving before actually recognizing them. Snakes are also symbols of change & healing. They have speed & agility, so when Snake comes into our life, the changes & transitions occur quickly and are soon recognized. Release any fears and do not resist the changes because they bring with them new expressions of creativity, wisdom & strength. When Snake appears, we will find opportunities for shedding the old and resurrecting some part of our life. .

### SNAKE ~ Questions to Ask:

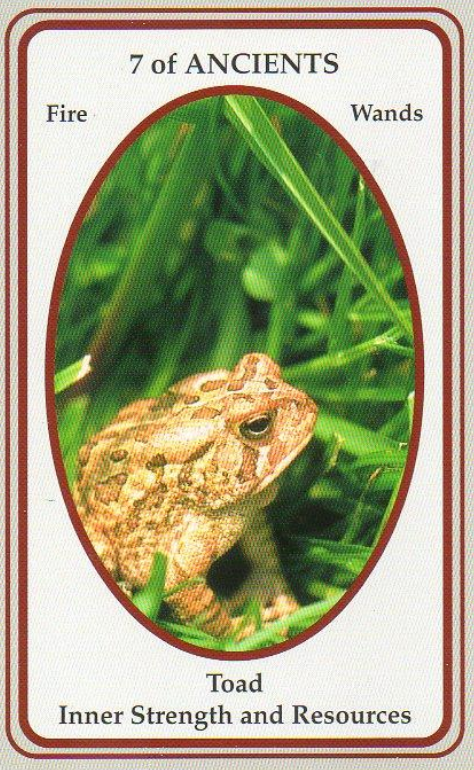
- Are we needing to make changes but aren't for some reason?
- Are we trying to force change too quickly?
- Are we hanging on to and not releasing what is no longer beneficial for us?
- Are we ignoring opportunities to heal our life?

11 ~\*Potential Shadow or Imbalance\*~ to be mindful of this quarter.



**CLOUDS :: 2 :: *Schizophrenia***

The person on this card brings a new twist to the old idea of "getting stuck between a rock and a hard place"! But we are in precisely this sort of situation when we get stuck in the indecisive and dualistic aspect of the mind. Should I let my arms go and fall head-first, or let my legs go and fall feet-first? Should I go here or there? Should I say yes or no? And whatever decision we make, we will always wonder if we should have decided the other way. The only way out of this dilemma is, unfortunately, to let go of both at once. You can't work your way out of this one by solving it, making lists of pros and cons, or in any way working it out with your mind. Better to follow your heart, if you can find it. If you can't find it, just jump--your heart will start beating so fast there will be no mistake about where it is!



**TOAD :: 7 :: *Inner Strength & Resources***

The appearance of Toad heralds a successful time of drawing upon & using our inner resources. Toads, like Frogs, have a wide & varied mythology & symbology and are associated with healing, money & prophecy. To see a Toad crossing or by your path as you are walking was a good omen, foretelling good luck & money. The presence of Toad heralds a time of seeing things & people more clearly – reminding us to use our strength of character & inner resources now. We will be blessed with solutions to problems & inner strength. When Toad appears, we are reminded to draw upon and use all of our skills. We have all of the resources necessary to accomplish our tasks at hand, but we must bring them out and use them. Toad heralds a time of personal advantage in endeavors & conflicts, and they embody the promise of success, achievement & recognition through our own abilities. Reversed Toad suggests that we may have gotten away from our roots & our strengths and may be forgetting what brought us to where we are now. Toads & Frogs have an amazing tongue that darts out to capture small insects & small moving creatures. If reversed, we may be missing or ignoring opportunities presenting themselves. We may be hesitating to act and use our abilities when the opportunities present themselves. We may be allowing fear to hinder us.

**TOAD :: Questions to Ask:**

- Are we being indecisive?
- Are we hesitating when opportunities arise for us?
- Are we letting fears prevent us from acting?
- Are we ignoring the past & the skills that brought us to where we are now?
- Are we being impatient & trying to leap further than we are capable right now?
- Do we need to be more protective?
- Do we not trust in our own resources or ourselves?

# SPECIAL Gratitude

---

**The Osho Zen Tarot Cards ~ *The Osho Int'l Foundation***

~ Text by Osho International Foundation

~ Illustrations by Ma Deva Padma of [EmbraceArt.com](http://EmbraceArt.com)

~ Published by St. Martin's Press



**Animal-Wise Tarot by Ted Andrews**

~ DragonHawk Publishing

---